

FANNY FRAYLE (Evesham Stick) coll. J. Hargreaves from George Collins.

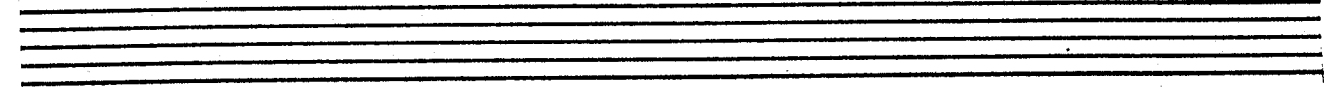
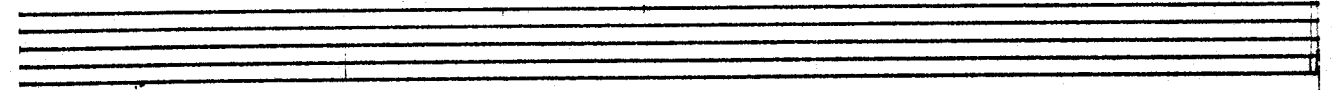
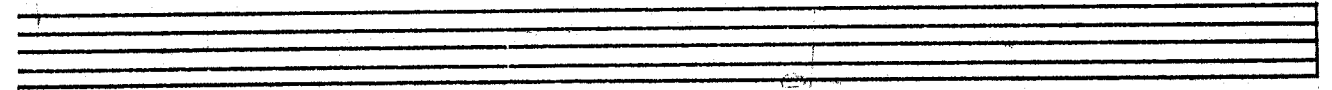
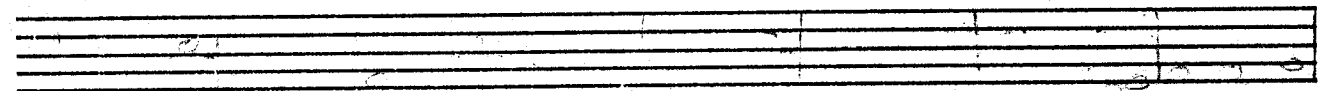
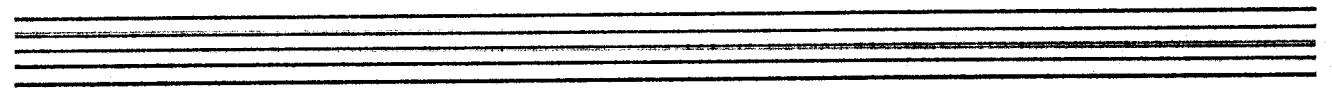
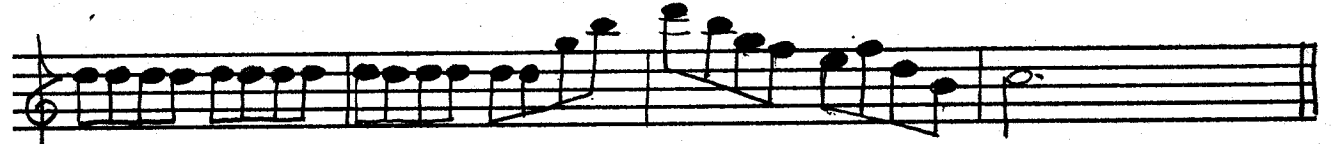
[A]



[B]

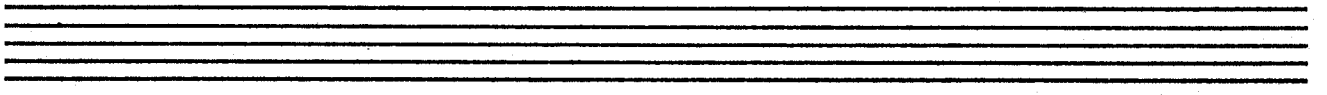


[C]

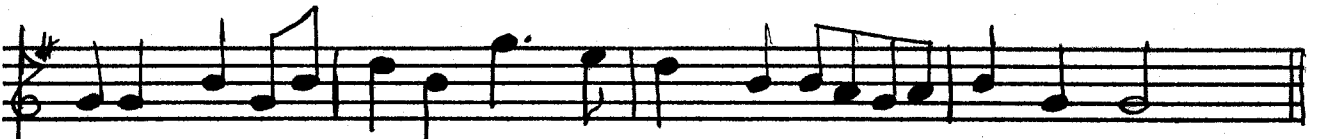


Collected by Snap from Wm Preece at Dilwyn 28/9.xii.09

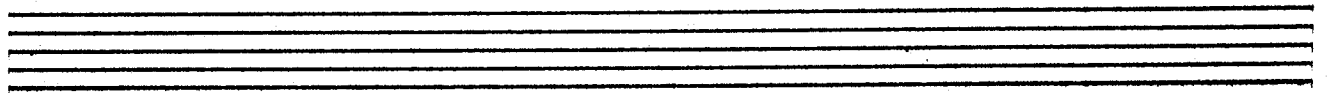
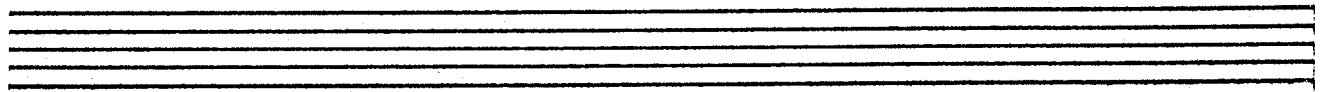
HUNTING THE SQUIRREL ("Woobley Marsh Sticks"  $A(A^2B^4)^4A^2$ )



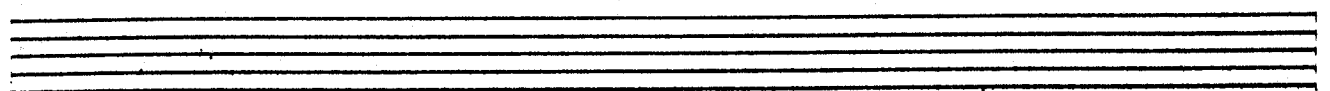
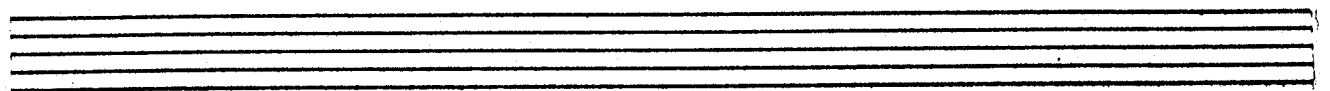
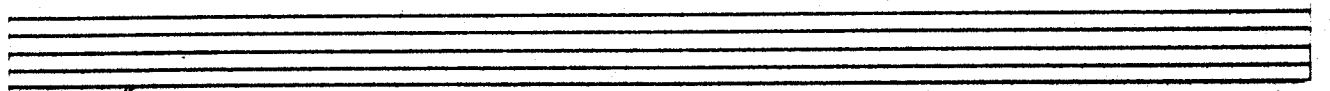
FLOWERS OF EDINBURGH ("Woobley Marsh Hankies"  $A(A^2B)^4A^2$ )



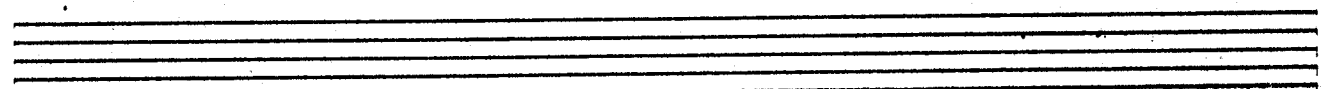
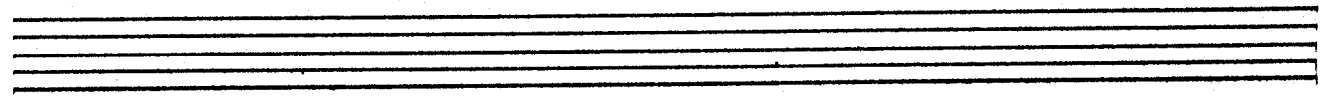
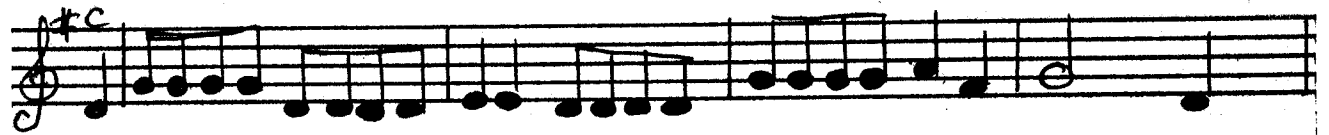
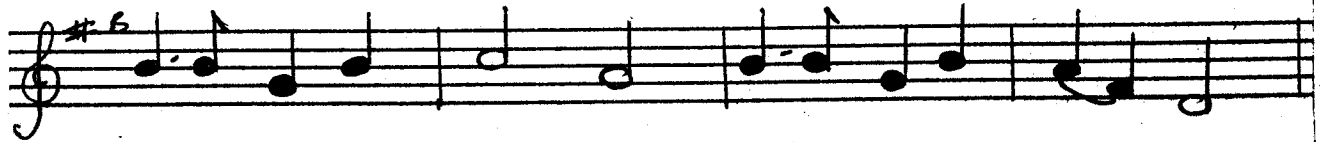
MUGH WENLOCK 'JIG' - collected by Mand Kemples.



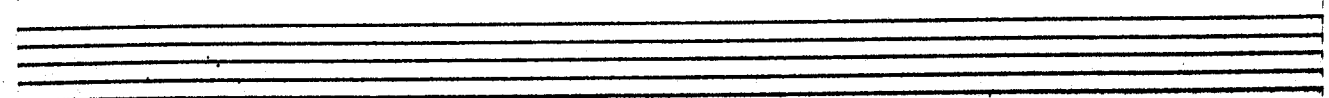
BROMBEROW HEATH 'THREE HANDED REEL' collected by Russel Northey II from Mrs B Hill.



BRASLEY MORRISTUNE - collected by J. E. C. Cowie from Annie Hoag, Basleby 30.V.57

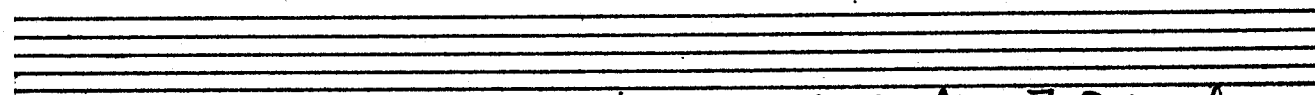


MURK WENLOCK 'NOT FOR JOE' collected by Maud Kerpel

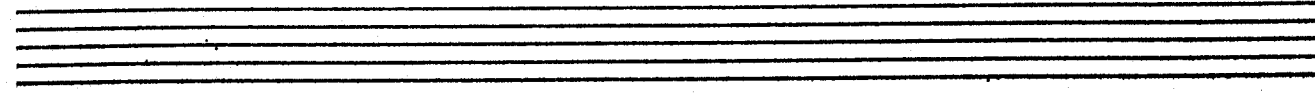
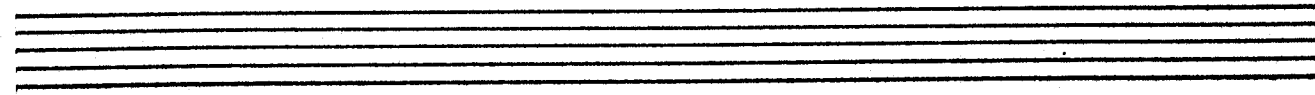
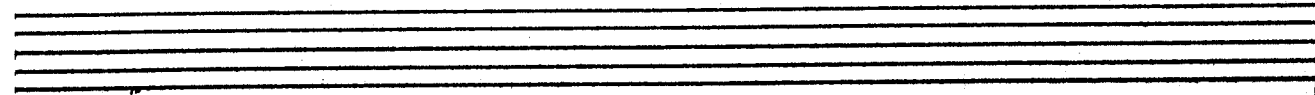
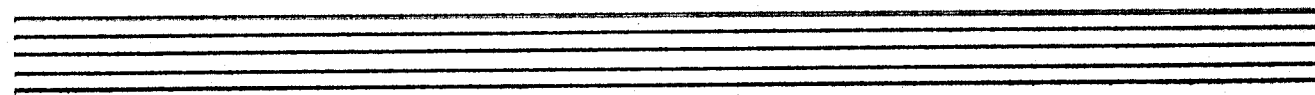


production & duplicating courtesy of Systemskill Ltd., Woking.

(NOT FOR JOE.) coll. Cecil Sharp & E. M. Loather from Jan Locke,  
xii.09



THREE JOLLY BLACK SHEEPskins collected by Alice J Ovens from  
William Preece, Dilwyn, '08.



THREE JOLLY SHEEPSKINS ~ coll. Cecil Sharp from John Locke, xii.09

Handwritten musical notation for "Three Jolly Sheepskins". The piece is in G major (one sharp) and 3/4 time. It consists of two staves. The first staff begins with a treble clef, a key signature of one sharp (F#), and a common time signature (C). A box labeled "A1" is placed above the first measure. The melody is written in eighth and sixteenth notes. The second staff continues the melody, also in eighth and sixteenth notes, and ends with a double bar line. A triplet of eighth notes is marked with a "3" above it in the final measure.

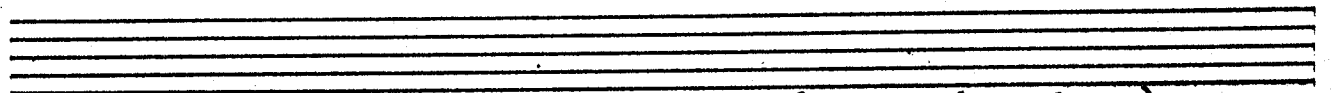
"TWIN SISTERS" coll. Mord Karples from Malou Hamilton, East Orange, Vermont.

Handwritten musical notation for "Twin Sisters". The piece is in G major (one sharp) and 3/4 time. It consists of five staves. The first staff begins with a treble clef, a key signature of one sharp (F#), and a common time signature (C). A box labeled "A1" is placed above the first measure. The melody is written in eighth and sixteenth notes. The second staff continues the melody, also in eighth and sixteenth notes, and ends with a double bar line. A box labeled "A2" is placed above the first measure of the second staff. The third staff continues the melody, also in eighth and sixteenth notes, and ends with a double bar line. A box labeled "B1" is placed above the first measure of the third staff. The fourth staff continues the melody, also in eighth and sixteenth notes, and ends with a double bar line. A box labeled "B2" is placed above the first measure of the fourth staff. The fifth staff continues the melody, also in eighth and sixteenth notes, and ends with a double bar line.

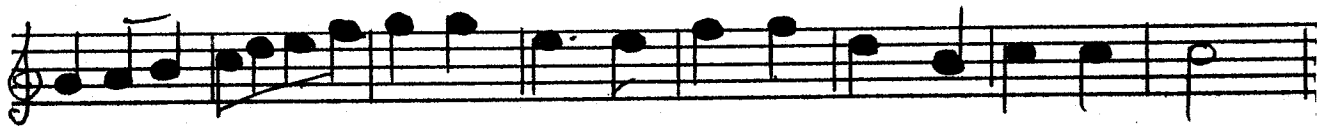
(Alternative B music is B1A2)

Five empty musical staves, each consisting of five horizontal lines, arranged vertically. They are intended for alternative B music as indicated by the text above.

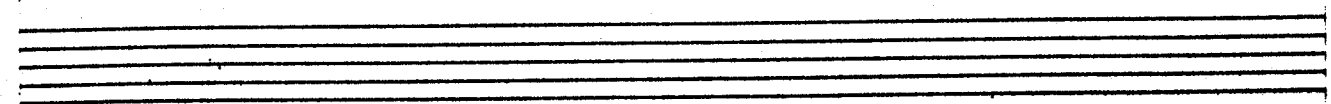
BRONSBOROUGH HEATH 'THREE-HAND REEL' collected by Hamel from Mrs B. Hill, 1950



WHITE LADIES ASTON collected by Maud Kerpeles (pp. 4505-6)



version of above from Roy Donnett's 'Other Mavis' (original key G).



WINSTER GALOP for Bromsbarrow Heath

A(A<sup>2</sup>B)<sup>n</sup>

Handwritten musical notation for 'WINSTER GALOP for Bromsbarrow Heath'. The piece is in G major (one sharp) and 2/4 time. It consists of four staves of music. The first staff is marked with a boxed 'A'. The second staff continues the melody. The third staff is marked with a boxed 'B'. The fourth staff concludes the piece. The notation includes eighth and sixteenth notes, rests, and a repeat sign at the end.

Two empty musical staves, each consisting of five lines.

BOBBY SHAFTEE for GOOSE GREEN

A(AB)<sup>n</sup>

Two empty musical staves, each consisting of five lines.

Handwritten musical notation for 'BOBBY SHAFTEE for GOOSE GREEN'. The piece is in G major (one sharp) and 2/4 time. It consists of four staves of music. The notation includes eighth and sixteenth notes, rests, and a repeat sign at the end.

Two empty musical staves, each consisting of five lines.



ROBIN THE OG (ROBIN JDIODGG)

A.A<sup>2</sup>(BA)<sup>n</sup>A

Handwritten musical notation for 'ROBIN THE OG' in treble clef, 2/4 time, with a key signature of one flat (Bb). The piece consists of four staves of music. The first staff begins with a treble clef, a key signature of one flat, and a common time signature. The melody is written in a simple, folk-like style with eighth and quarter notes. The second staff continues the melody with some slurs. The third staff features a slur over a group of notes. The fourth staff concludes the piece with a double bar line.

'BONNETS SO BLUE' collected by J. Hargreaves from George Collins, tune for Evesham Handkerchief dance, commonly used for Upton.

Handwritten musical notation for 'BONNETS SO BLUE' in treble clef, 2/4 time, with a key signature of one sharp (F#). The first staff begins with a treble clef, a key signature of one sharp, and a common time signature. The melody is written in a simple, folk-like style with eighth and quarter notes. A bracket labeled 'A' is placed above the first few notes.

Handwritten musical notation for 'BONNETS SO BLUE' in treble clef, 2/4 time, with a key signature of one sharp (F#). The second staff continues the melody with eighth and quarter notes.

Handwritten musical notation for 'BONNETS SO BLUE' in treble clef, 2/4 time, with a key signature of one sharp (F#). The third staff continues the melody with eighth and quarter notes. A bracket labeled 'B' is placed above the first few notes.

Handwritten musical notation for 'BONNETS SO BLUE' in treble clef, 2/4 time, with a key signature of one sharp (F#). The fourth staff continues the melody with eighth and quarter notes.

Handwritten musical notation for 'BONNETS SO BLUE' in treble clef, 2/4 time, with a key signature of one sharp (F#). The fifth staff continues the melody with eighth and quarter notes. A bracket labeled 'last A' is placed above the first few notes.

Handwritten musical notation for 'BONNETS SO BLUE' in treble clef, 2/4 time, with a key signature of one sharp (F#). The sixth staff concludes the piece with a double bar line.

Two empty musical staves at the bottom of the page, consisting of five lines each.