

AS NOT INCLUDED BY BACON IN BLACK BOOK

suggested insertion pages up left hand side

The image shows a handwritten musical score on ten systems of staves. Each system contains a title and attribution, followed by musical notation. The titles and attributions are: 1. Bampton - Mad of the Mill - Manninghams - Tanner; 2. Willow Tree - diao; 3. Harvest Home - Gamford - Wells; 4. Wait for the Waggon - diao; 5. When the Sun Goes Down - C.A. - Wells; 6. Longborough - Black Joke - C.A. - Mason - j's; 7. Lumps of Plum Pudding - C.A. & Carey - Mason; 8. Molly Oxford - C.A. - Mason; 9. Shepherd's Hey - C.A. - Taylor; 10. Swaggering Boney - C.A. & Carey - Mason. The notation includes treble clefs, a key signature of one sharp (F#), and various rhythmic values. A 'p' dynamic marking is present on the left side of the seventh system.

BAMPTON - MAD OF THE MILL - Manninghams - Tanner

- WILLOW TREE - diao

- HARVEST HOME - Gamford - Wells

- WAIT FOR THE WAGGON - diao

- WHEN THE SUN GOES DOWN - C.A. - Wells

LONGBOROUGH - BLACK JOKE - C.A. - Mason - j's

- LUMPS OF PLUM PUDDING - C.A. & Carey - Mason

- MOLLY OXFORD - C.A. - Mason

- SHEPHERD'S HEY - C.A. - Taylor

- SWAGGERING BONEY - C.A. & Carey - Mason

lower

BADBY - SATURDAY NIGHT - Cox - Butterworth MSS

Handwritten text on the left margin, possibly a page or system number.

Musical notation for the first system, including a treble clef and a key signature of one sharp (F#).

BOBBING JOE - Ashby

Musical notation for the second system.

MORRIS TUNE - Ashby

Musical notation for the third system.

MORRIS TUNE - Cole

Musical notation for the fourth system.

Musical notation for the fifth system.

BAMPTON - NUTTING GIRL - B. Clarke

Musical notation for the sixth system.

Handwritten text on the left margin, possibly a page or system number.

PRINCESS ROYAL - Giles MSS

Musical notation for the seventh system.

BOB AND JOAN - Tanner - Manning MSS

Musical notation for the eighth system.

OLD WOMAN TOSSED UP - Giles MSS

Musical notation for the ninth system.

DEAR OLD HOME - Wells - C#

Musical notation for the tenth system.

Musical notation for the eleventh system.

BIDFORD - HEEL AND TOE - JG

on page 73

Musical notation for Bidford - Heel and Toe - JG

DEVIL AMONG THE TAILORS - C# - JG

Musical notation for Devil Among the Tailors - C# - JG

BLEDINGTON - GREENSLEEVES - RKS - Hathaway

opposite p 96

Musical notation for Bledington - Greensleeves - RKS - Hathaway

- GREENSLEEVES - Sharp - Bird

Musical notation for Greensleeves - Sharp - Bird

LORD SHERBORNE'S JIG - RKS - Hathaway

Musical notation for Lord Sherborne's Jig - RKS - Hathaway

GALLANT HUSSAR - GEM 1942 - Hathaway

Musical notation for Gallant Hussar - GEM 1942 - Hathaway

BRACKLEY - BONNY BLUE HANDKERCHIEF - C# - Tyler

op. p 103

Musical notation for Brackley - Bonny Blue Handkerchief - C# - Tyler

DUCKLINGTON - PIPE DANCE - Carey mss - Druce

on p 176

Musical notation for Ducklington - Pipe Dance - Carey mss - Druce

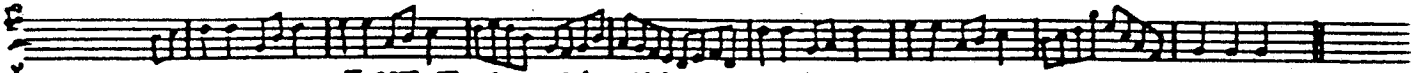
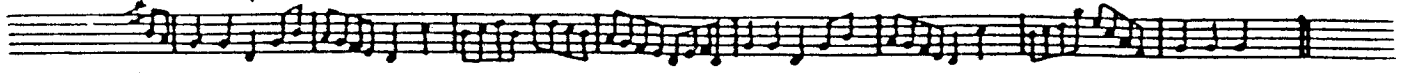
2 draws

FIELDTOWN - PRINCESS ROYAL - C# - Franklin

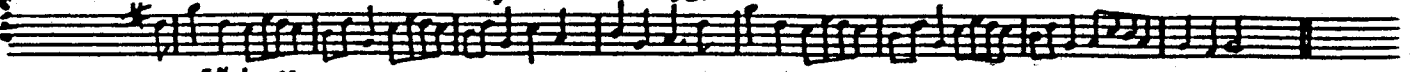
op. p 185

Musical notation for Fieldtown - Princess Royal - C# - Franklin

HEADINGTON - SIX HAND REEL - C# - Küller



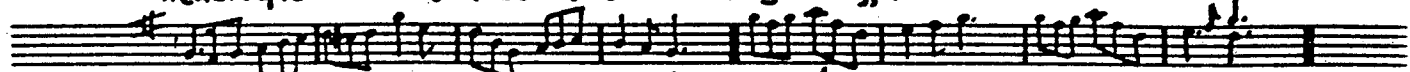
- FIRST OF MAY - C# - Küller



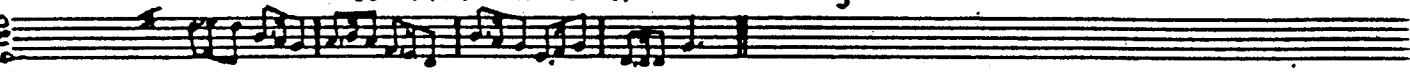
For 5th finger



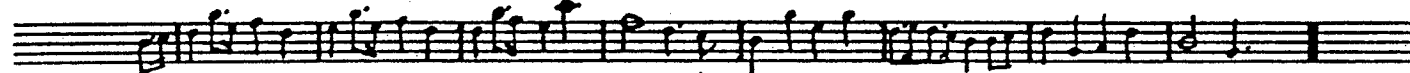
HEADINGTON - BONNY GREEN GARTERS - Carey - Trafford



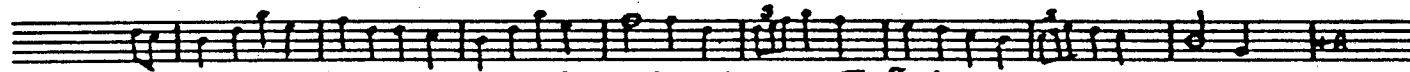
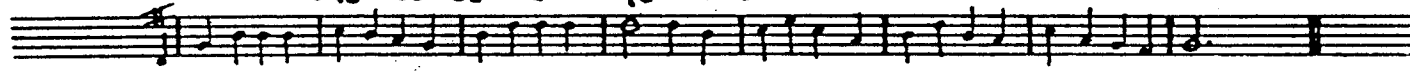
- CONSTANT WILLIE - Herchel - Dandridge



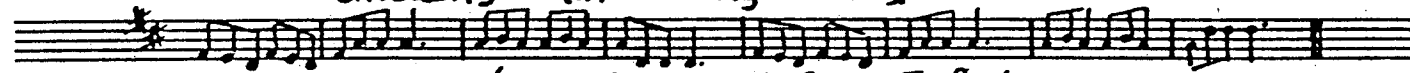
- COUNTRY GARDENS - diko



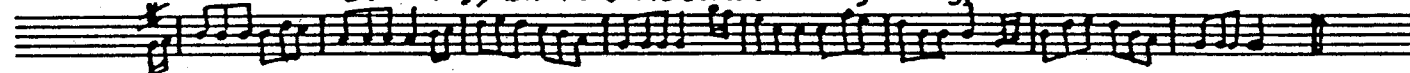
- TO ROBNEY WE WILL GO - diko



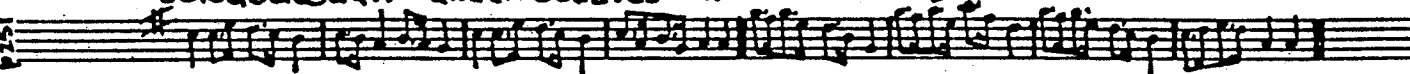
- SATURDAY NIGHT - Manning MS - Trafford



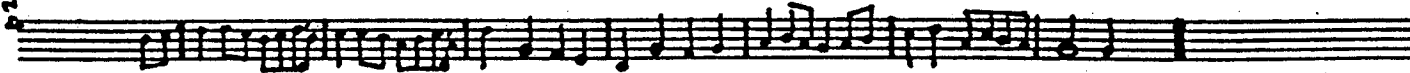
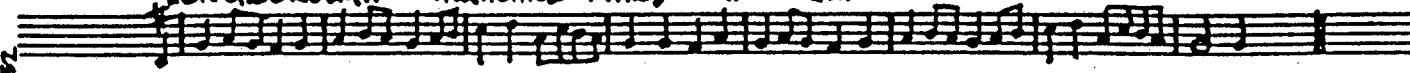
- 29TH MAY / BALANCE THE STEAM - Carey - Trafford



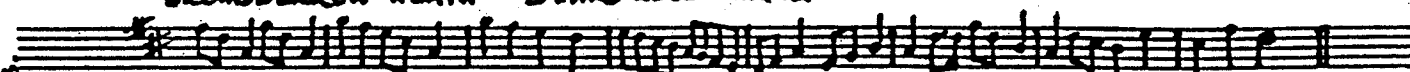
LONGBOROUGH - GREENSLEEVES - C# - W. Hathaway



LONGBOROUGH - HIGHLAND MARY - C# - Mason



BROMSBERROW HEATH - 3 HAND REEL - Hamer



HEADINGTON - JOCKEY TO THE FAIR - Toye - Kimber

Handwritten musical notation for the piece 'HEADINGTON - JOCKEY TO THE FAIR' by Toye and Kimber. The notation is written on a five-line staff in G major (one sharp) and 2/4 time. It features a melody with eighth and sixteenth notes, including some triplets. The piece concludes with a double bar line.

- LUMPS O' PLUM PUDDING - Carey - Horwood

Handwritten musical notation for the piece 'LUMPS O' PLUM PUDDING' by Carey and Horwood. The notation is on a five-line staff in G major and 2/4 time, featuring a melody with eighth notes and some triplet patterns.

- PRINCESS ROYAL - RKS - Kimber

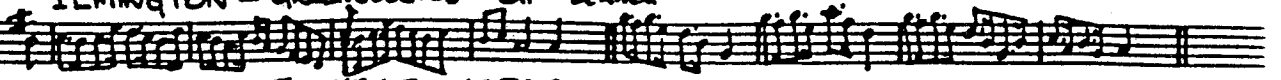
Handwritten musical notation for the piece 'PRINCESS ROYAL' by RKS and Kimber. The notation is on a five-line staff in G major and 2/4 time, featuring a melody with eighth notes and some triplet patterns.

- SHEPHERD'S HEEL & TOE - Carey - Tra Wood

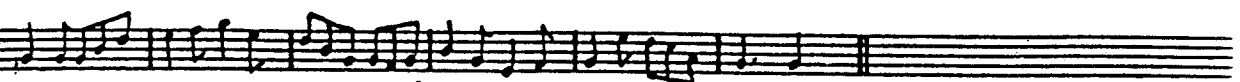
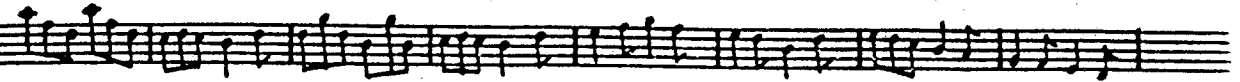
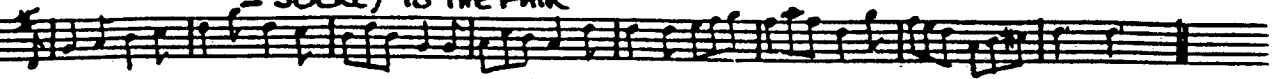
Handwritten musical notation for the piece 'SHEPHERD'S HEEL & TOE' by Carey and Tra Wood. The notation is on a five-line staff in G major and 2/4 time, featuring a melody with eighth notes and some triplet patterns.

A series of ten empty musical staves, each consisting of five horizontal lines, provided for additional notation.

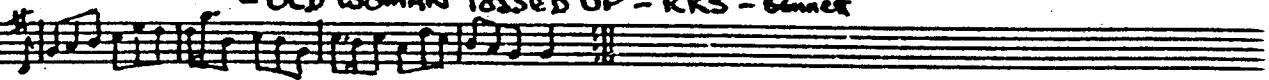
ILMINGTON - GREENSLEEVES - C# - Bennett



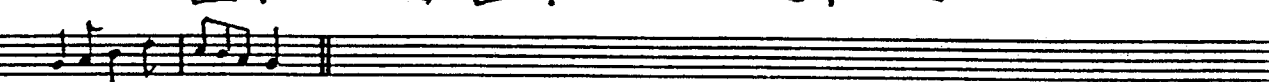
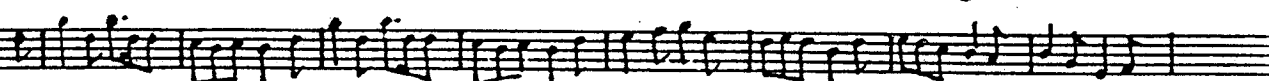
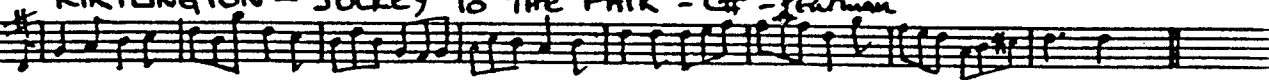
- JOCKEY TO THE FAIR



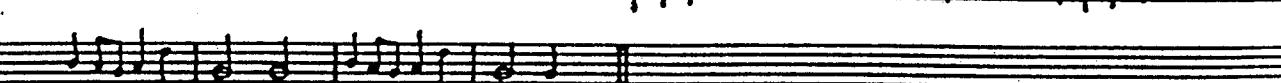
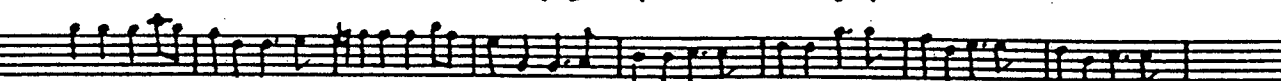
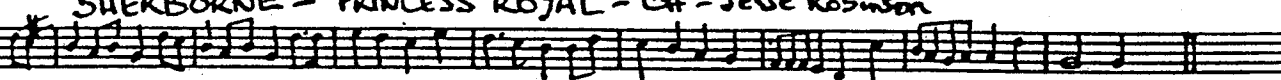
- OLD WOMAN TOSSED UP - RKS - Bennett



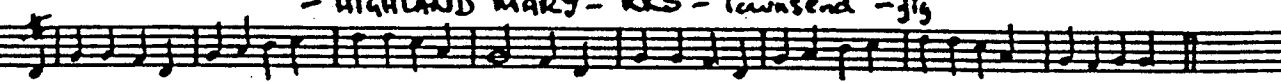
KIRTLINGTON - JOCKEY TO THE FAIR - C# - Pearman



SHERBORNE - PRINCESS ROYAL - C# - Jesse Robinson



- HIGHLAND MARY - RKS - Townsend - jig



STANTON HARCOURT - SWEET NIGHTINGALE - C# - Sherbone

