

MOLLY DANCES

GIRTON & HISTON - Cambridge shire

team:- 6 dancers - one of whom a Bessy or Molly.
Fiddler or concertina player (perhaps with an umbrella man)
Several collectors or cadgers.
Maybe up to 6 men dragging a plough & others cracking whips.
costume:- carried handks & wore a form of baldrick - wide with many
rosettes - but no bells. White shirts & tophats decorated.

COLLEGE HORNPIPE - tune - Sailor's Hornpipe.

Hands 6 - 7 slips clockwise, 7 slips back.
Face up & engage with partner, putting arms behind partners backs,
cast off to left & back to place, waving handk in free hand.
Nos. 1 & 4 swing; Nos 2 & 3 swing.
1 & 2 lead down middle & back.
First 2 cus. swing & change places.
Repeat whole till reach original places.

BIRDS A BUILDING

Nos. 1 & 2 cross over giving right hands, Nos. 1 & 3, 2 & 4 change
down the sides & so on to places.
Nos 1 & 2 lead down middle & back.
First two cus swing & change.
Repeat by Nos. 1 & 2 from 2nd place. Carry on till all back home.

SMASH THE WINDOW

Nos. 1, 2 & 4 hands three round & back.
Nos 1, 2 & 3
1 & 2 lead down middle & back.
First 2 cus swing & change etc.

DOUBLE CHANGE SIDES

Nos 2 & 4 lead between 1 & 3 & fall back; Nos 1 & 3 lead between
2 & 4 & fall back.
1 & 2 lead down middle & back.
First 2 cus swing & change.

Step throughout ordinary country dance step - no double steps or
capers.

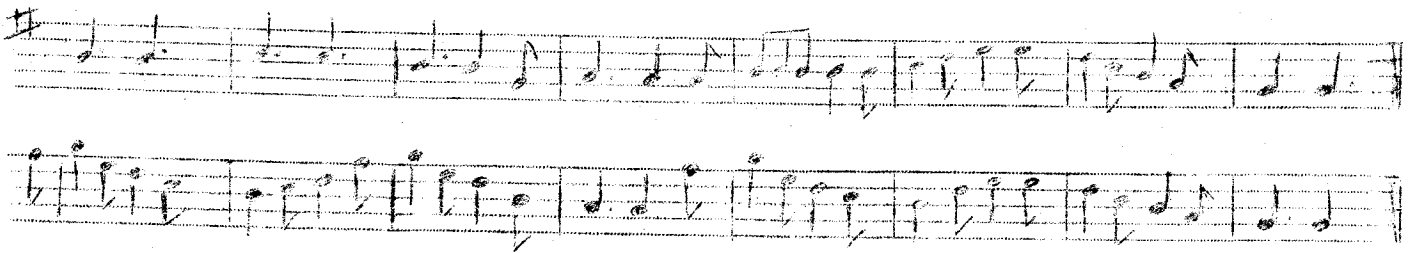
Clearly any duple or triple minor country dance could be pressed
into use. The costume suggests what FESTIVAL dress for men could
be; a single or double wide baldrick decorated with rosettes &
carrying a handk., over white shirt & dark trousers - as this
seems to be the standard traditional ceremonial dress for the
English.

SOME TUNES

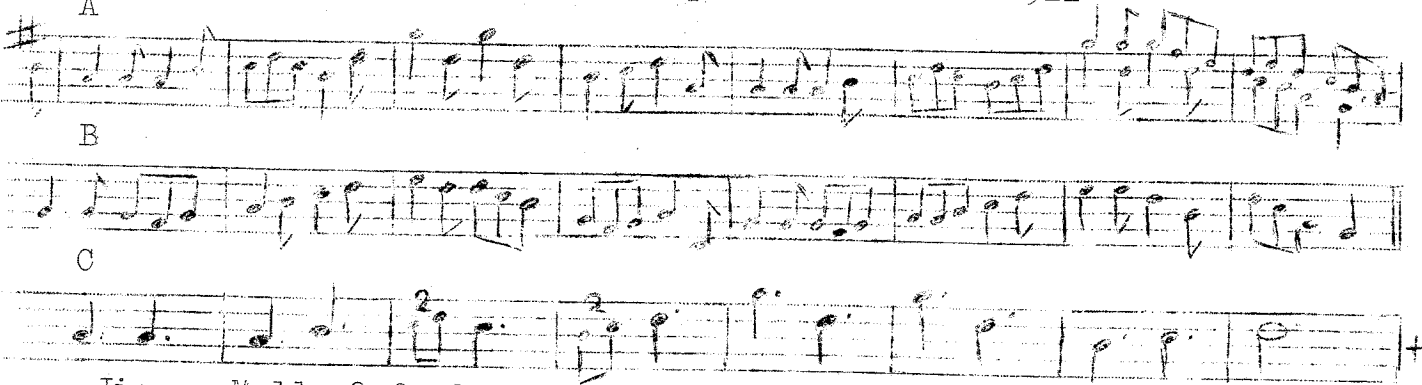
Buffoon - Ilmington - Schofield from Sam-Bennett c.1938



Washing Day - Adderbury - Blunt from Walton c.1917



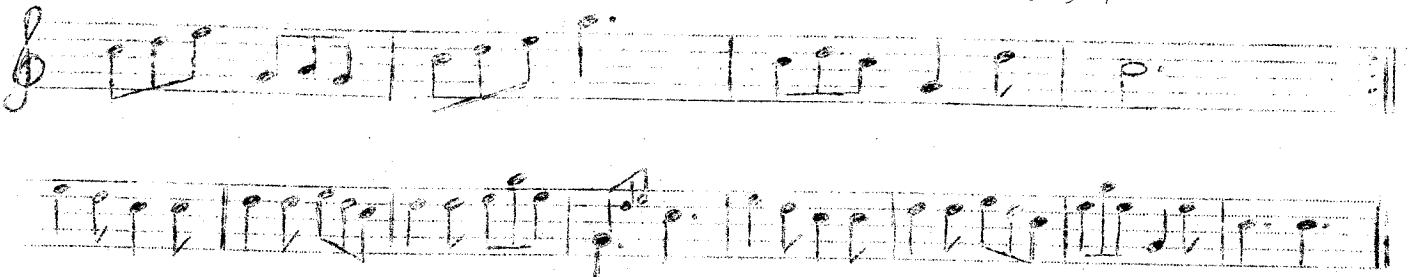
Month of May - Fieldtown - Sharp from Franklin 1911



Jig as Molly Oxford.

+ last 4 bars of A music

Maid of the Mill - Bucknell - Peck from Powell c.1927



Sidestep dance as Willow Tree.